

MDB Municipal Capacity Assessment 2011

Comparative Report Card covering the 2010/2011 Municipal Financial Year

Fezile Dabi District Municipality

As at 08 August 2012

Section 1: General Information

Name of Municipality:	Fezile Dabi District Municipality
MDB Code:	DC20
Name of Municipal Manager:	Monty Mongake
Address:	PO Box 10, SASOLBURG, 1947
Telephone Number:	(016) 970 8607
Email Address:	momom@nfsdc.co.za
Website Address:	www.feziledabi.gov.za

Introduction

The MDB's Municipal Capacity Assessments 2011 aims to collect and analyse capacity information from all municipalities in the country. A key output of the assessments is the development and distribution of a Comparative Report Card to each municipality. This document represents Fezile Dabi District Municipality's Comparative Report Card and provides useful analytical comparisons of capacity between Fezile Dabi District Municipality and the average across all municipalities in the same municipal category.

For the purposes of Capacity Assessments, municipalities are divided into the following 7 categories which are essentially sub-categories of the A, B and C categories identified in the constitution:

- A: Metros (8 municipalities)
- B1: Secondary cities: the local municipalities with the largest budgets (19 municipalities)
- B2: Local municipalities with a large town as core (27 municipalities)
- B3: Local municipalities with small towns, with relatively small population and significant proportion of urban population but with no large town as core (110 municipalities)
- B4: Local municipalities which are mainly rural with communal tenure and with, at most, one or two small towns in their area (70 municipalities)
- C1: District municipalities which are not water services authorities (23 municipalities)
- C2: District municipalities which are water services authorities (21 municipalities)

It should be noted that the categorisations have been widely used by DCoG and National Treasury for analytical purposes. These categorisations primarily serve to illustrate the structure of local government and assess the impact of policy decisions.

Using this methodology, **Fezile Dabi is categorised as a Category C1 municipality.** The average for this report card is calculated based on the data received from a total of 23 municipalities in this municipal category this year.

Reporting period and data sources

This Report Card covers the 2010/2011 Municipal Financial Year and largely relies on data from the following sources:

Source	Year	Custodian	Specific data used in this assessment
Completed MDB Municipal Capacity Assessment Questionnaires	2010/11	Municipalities directly	All
Local Government Budget and Expenditure Database	2010/11	National Treasury	Operating budget and expenditure data (pre-audited as at 30 June 2012)
Blue Drop and Green Reports for Water Services Authorities	2010/11	Department of Water Affairs	Blue Drop and Green Scores
Community Survey	2007	Statistics South Africa	Household and population figures (contextual data)

Much of the data reflected in this report is drawn from the municipality's own completed Capacity Assessments questionnaire. Should any data reported here appear to be incorrect please inform us by sending an email to capacity@pdg.co.za. In your email specify the municipality's details, relevant question numbers in the questionnaire and the corrections to be made.

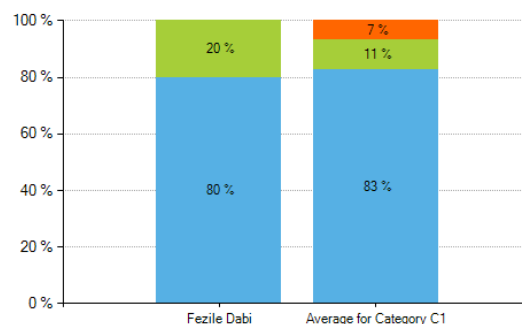
Section 2: Contextual Information

	Fezile Dabi	Average for Category C1
Operating Expenditure:	R 124 114 000	R 174 176 778

Section 3: Municipal Staffing

Section 3.1: Staff Employment

	Fezile Dabi		Average for Category C1
	Number	Percent	Percent
Posts vacant - Unfunded	0	0.0%	6.6%
Posts vacant - Funded	30	20.1%	10.6%
Posts filled	119	79.9%	82.8%
TOTAL	149	100.0%	100.0%



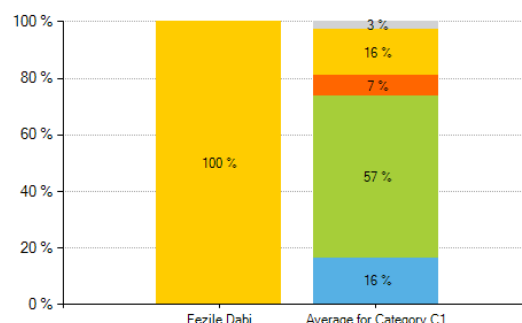
	Fezile Dabi	Average for Category C1
Total number of staff employed	119	252
Ratio of staff employed relative to total number of posts filled	100.0%	91.9%

	Fezile Dabi	Average for Category C1
Total number of posts in organogram	149	279
Funded vacancies as percent of all posts in organogram	20.1%	211.1%
Funded vacancies as percent of filled posts in organogram	25.2%	12.7%

Section 3.2: Staff Exits

	Fezile Dabi	Average for Category C1
Total number of staff that left during the Financial Year	2	775
Percent of staff that left during the Financial Year	1.7%	15.4%

	Fezile Dabi		Average for Category C1
	Number	Percent	Percent
Dismissals	No data	No data	2.8%
Resignations	2	100.0%	16.3%
Retirement	No data	No data	7.4%
End of Contract Period	No data	No data	57.2%
Other	No data	No data	16.4%
TOTAL	2	100.0%	100.0%



Section 3.3: Section 57 Staffing

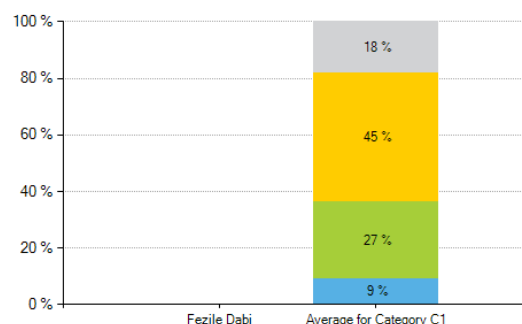
	Fezile Dabi	Average for Category C1
Percent of Section 57 posts filled	100.0%	80.2%
Percent of Section 57 posts vacant for more than three months during MFY	0.0%	21.8%
Percent of Section 57 Managers that have signed performance agreements in place	100.0%	103.7%
Percent of Section 57 Managers that have signed employment contracts in place	100.0%	107.4%

Section 3.4: Section 57 Exits

	Fezile Dabi	Average for Category C1
Total number of Section 57 staff that left during the Financial Year	0	11
Percent of Section 57 Managers that left during the Financial Year	0.0%	10.9%

Section 57 Managers that left due to:

	Fezile Dabi		Average for Category C1
	Number	Percent	Percent
Dismissals	0	-	18.2%
Resignations	0	-	45.5%
Retirement	0	-	0.0%
End of Contract Period	0	-	27.3%
Other	0	-	9.1%
TOTAL	0	-	100.0%



Section 3.5: Staffing Skills Profile

	Fezile Dabi	Average for Category C1
Professional staff as percent of total staff *	52.9%	12.3%
Number of staff: Registered Professional Engineers	0	14
Number of staff: Technologists	0	10
Number of staff: Technicians	3	70
Number of staff: Registered Planners	1	15
Number of staff: Chartered Accountants	0	4
Number of staff: Registered with the Institute of Municipal Finance Officers	4	38
Number of staff: Professional staff	63	617
Number of Registered engineers per 10 000 population	0.0000	0.0109
Number of Technologists per 10 000 population	0.0000	0.0078
Number of Technicians per 10 000 population	0.0633	0.0545
Number of Registered planners per 10 000 population	0.0211	0.0117

* Defined here as having at least an undergraduate degree from a University or a Technical University

Section 4: Distribution by Function

	Function Performed	Percent of Staff	Average for Category C1	Percent of Operating Expenditure	Average for Category C1
Governance and Administration	Yes	51.5%	39.9%	100.0%	48.4%
Water Services	No	N/A	3.1%	0.0%	2.5%
Electricity and Gas Reticulation	No	N/A	0.1%	0.0%	0.2%
Municipal Transport	No	N/A	0.3%	0.0%	1.7%
Waste Management	No	N/A	0.4%	0.0%	0.3%
Roads and Stormwater Systems	No	N/A	12.8%	0.0%	12.3%
Community and Social Services	No	N/A	3.3%	0.0%	4.2%
Planning and Development	No	N/A	1.3%	0.0%	6.1%
Emergency Services	Yes	17.8%	21.6%	0.0%	7.8%
Municipal Health	Yes	20.8%	11.2%	0.0%	1.0%
Primary Health Care	No	N/A	No data	0.0%	3.3%
Environmental Management	Yes	3.0%	1.6%	0.0%	0.7%
Economic Development	Yes	6.9%	2.2%	0.0%	8.2%
Housing	No	N/A	0.7%	0.0%	1.5%
Traffic and Policing	No	N/A	1.6%	0.0%	1.7%
		100 %	100 %	100 %	100 %

Section 5: Governance and Administration

Municipality performs this function:	Yes
--------------------------------------	-----

Resources

	Fezile Dabi	Average for Category C1
Staff per 10,000 population	1.0968	1.0096
Operating Expenditure per 10,000 population	R 2 617 947	R 1 182 056

Staffing Skills Profile

	Fezile Dabi	Average for Category C1
Percent of staff that are professional (i.e. have at least an undergraduate degree)	96.2%	48.8%
Percent of posts vacant	16.9%	15.9%

Section 13: Emergency Services

Municipality performs this function:

Fire fighting	Yes
Rescue services	No
Disaster management	Yes
Ambulance services	No

Resources

	Fezile Dabi	Average for Category C1
Staff per 10,000 population	0.3797	0.5469
Operating Expenditure per 10,000 population	R 0	R 189 779

Staffing Skills Profile

	Fezile Dabi	Average for Category C1
Percent of staff that are professional (i.e. have at least an undergraduate degree)	11.1%	7.1%
Percent of posts vacant	25.0%	10.1%
Number of firefighters	13	57
Number of fire trucks and specialised emergency vehicles	3	13
Number of fire stations	1	4
Number of ambulances	Not applicable	14
Number of firefighters per 10,000 population	0.27	0.44
Number of fire trucks and specialised emergency vehicles per 10,000 population	0.06	0.10
Number of fire stations per 10,000 population	0.02	0.03
Number of ambulances per 10,000 population	Not applicable	0.01

Service Delivery Indicators

	Fezile Dabi	Average for Category C1
Percent of fire service calls responded to within 7 minutes	No data	45.7%
Approved Disaster Management Plan	Yes	-

Section 14: Municipal Health

Municipality performs this function:	Regulation & facilitation	Service provision
Municipal health	No	Yes
Licensing and control of undertakings that sell food to the public	No	Yes
Noise pollution	No	No
Pounds	No	No
Accommodation, care and burial of animals	No	No
Licensing of dogs	No	No

Resources

	Fezile Dabi	Average for Category C1
Staff per 10,000 population	0.4430	0.2828
Operating Expenditure per 10,000 population	R 0	R 25 422

Staffing Skills Profile

	Fezile Dabi	Average for Category C1
Percent of posts vacant	19.2%	23.3%

Service Delivery Indicators

	Fezile Dabi	Average for Category C1
Percent of licensed food handling facilities that were inspected during the FY	No data	144.6%

Section 16: Environmental Management

Municipality performs this function:

Environmental planning	No
Bio-diversity management	No
Climate change interventions	No
Alternative energy planning	No
Air pollution	Yes

Resources

	Fezile Dabi	Average for Category C1
Staff per 10,000 population	0.0633	0.0405
Operating Expenditure per 10,000 population	R 0	R 18 212

Staffing Skills Profile

	Fezile Dabi	Average for Category C1
Percent of staff that are professional (i.e. have at least an undergraduate degree)	100.0%	88.5%
Percent of posts vacant	0.0%	26.6%

Service Delivery Indicators

	Fezile Dabi	Average for Category C1
By-laws in place	No	-
Self-assessment of enforcement of by-laws	No data	-
Approved Environmental Management Plan	Not applicable	-
Number of air quality monitoring stations	1	2

Section 17: Economic Development

Municipality performs this function:	Regulation & facilitation	Service provision
Local tourism	No	Yes
Markets	No	No
Abattoirs	No	No
Trading regulations	No	No
Street trading	No	No
Billboards and the display of advertisements in public places	No	No
Fences and fences	No	No
Control of undertakings that sell liquor to the public	No	No
Local economic development	No	Yes

Resources

	Fezile Dabi	Average for Category C1
Staff per 10,000 population	0.1477	0.0553
Operating Expenditure per 10,000 population	R 0	R 199 489

Staffing Skills Profile

	Fezile Dabi	Average for Category C1
Percent of staff that are professional (i.e. have at least an undergraduate degree)	42.9%	67.6%
Percent of posts vacant	46.2%	22.4%

Service Delivery Indicators

	Fezile Dabi	Average for Category C1
By-laws in place	No	-
Self-assessment of enforcement of by-laws	No data	-